

WEST YORKSHIRE SPINNERS

Free



Signature
SPARKLE 4 PLY

Alexander

Hand Knit Sock Design by Winwick Mum



Signature Sparkle 4ply – Alexander

Design: **Winwick Mum**

Technical Editor: **Helen Birch**

Copyright: This design is copyrighted and must not be knitted for resale. Reproduction of this publication is protected by copyright and sold on the condition that it is used for non-commercial purposes.

Disclaimer

Please note that quantities are based on average usage and therefore are approximate. We cannot accept responsibility for the finished items if any yarn other than the one specified is used.

Although every effort has been made to ensure that instructions are correct, West Yorkshire Spinners cannot accept any liabilities.

Owing to photography and printing restrictions the colour reproduction is matched as closely as possible to the yarn.

Alexander Socks

Bootlace Cables and Chevron Sock Design by Winwick Mum

Abbreviations

*	repeat the instructions following the single asterisk as directed
()	work instructions within brackets as many times as directed
[]	work instructions within brackets for a specific size
0	no stitches or times
cm	centimetres
CN	cable needle
cont	continue
dec	decrease(ing)
DPN(s)	double pointed needle(s)
g	grams
in	inch(es)
inc	increase(ing)
K	knit
K2tog	knit 2 together
LH	left hand
mm	millimetres
P	purl
P2tog	purl 2 together
Pfb	purl into front and back of stitch to make 1 stitch
rep	repeat
RH	right hand
rnd(s)	round(s)
sl1p	slip 1 stitch purlwise
ssk	slip a stitch knitwise and return to left needle, K2tog through back of loops
st(s)	stitch(es)

Special Abbreviations

C4B	Slip next 2 sts onto CN and hold at back of work, K2, K2 from CN.
C4F	Slip next 2 sts onto CN and hold at front of work, K2, K2 from CN.
dec 5	Slip next 3 sts to the RH needle. Pass first st on RH needle over first st (nearest the tip) and off needle, slip the first st from RH needle back to LH needle, pass second st on LH needle over this st and off needle, slip first st back to RH needle, pass second st on RH needle over and off needle, then slip first st on RH needle back to LH needle, pass second st on LH needle over and off needle, then purl remaining sts (5 sts decreased to 1).
inc 5	Lift bar between next st and previous st over LH needle and knit into back of it. (Knit, purl, knit) all into next st, then lift bar between st and next st over LH needle and knit into back of it (1 st increased to 5).
LT	Left Twist. Taking your RH needle behind your work, insert your RH needle into the back loop of the second st on your LH needle. Now bring your needle forward and K into the first st on the LH needle in the usual way and slide both sts off the LH needle.
RT	Right Twist. Keeping your needles at the front of your work, insert your RH needle into the second st on the LH needle knitwise and knit the st, but don't take the st off the needle. Now knit into the first st on the LH needle in the usual way and slide both sts off the LH needle.
T4F	Slip the next 2 sts onto CN and hold at back of work, K2, then P2 from CN.
T4B	Slip the next 2 sts onto CN and hold at front of work, P2, then K2 from CN.

There is a handy video on our YouTube channel for the dec 5 and inc 5 technique @westyorkshirespinners

Designer Notes

“Atten-shun! Inspired by the iconic Nutcracker soldier, a character from *The Nutcracker* ballet and a popular Christmas ornament. You'll find bootlace cables, military-style braiding and even uniform chevrons in this sock design. Now quick march and cast on...”

Christine
X

75% WOOL / 23% NYLON / 2% POLYESTER		
4ply	3.25mm US3	3.25mm US3
Tension 10cm/4"sq	400 Metres	437 Yards
36 ROWS 28 sts	100g Ball	
Reshape whilst damp Do not tumble dry		
75% WOOL / WOLLE / LANA / LAINE / ULL / VILLA 23% NYLON / POLYAMID / POLIAMIDA / POLYAMIDE / POLYAMID / POLYAMIDI 2% POLYESTER / POLYESTER / POLIÉSTER / POLYESTER / POLYESTER / POLYESTERI		

Alexander Socks

Bootlace and Chevron Sock Design by Winwick Mum

Level 

Yarn

West Yorkshire Spinners – Signature Sparkle 4ply



Nutcracker (1166)
1 x 100g

Measurements

To Fit Ball of Foot (circumference)

cm	20	21	23	24
in	8	8¼	9	9½

Equipment

Three Options For Needles

One 2.5mm (UK12/US1.5) short circular needle
and one set of 2.5mm (UK12/US1.5) DPNs

Or One set of 2.5mm (UK12/US1.5) DPNs

Or One 2.5mm (UK12/US1.5) 80cm long circular needle.

For a Looser Cuff (optional)

One set of 3mm (UK11/US3) DPNs

Cable needle

Stitch holder (optional)

Two stitch markers

Wool needle

Needle Note

These socks are knitted on 2.5mm needles, not 3.25mm as stated on the ball band.

This will produce a different tension but will ensure a firmer, more hard-wearing fabric for your socks. The ideal tension for these socks is 30 sts to 10 cm (4 in) so use whatever size needles are required to reach that tension and do check that your knitted fabric is firm but not stiff.

Tension

30 sts and 40/42 rows to 10cm over stocking stitch (worked in the round) on 2.5mm needles. Always use the size of needles to get the correct tension.

It is essential to work to the stated tension to ensure success.

Pattern Note

When working from a chart you will read all rounds from right to left. Grey “no stitch” blocks are exactly that – no stitch – so ignore them as you count the stitches for the panel on that round.

For matching socks, start knitting at the second colour into the ball as you don't know where the first one started, and pull the yarn out of the ball to find the repeat for the second sock.

Cuff

Using Nutcracker and 3mm DPNs, cast on 60 [64:68:72] sts. The pattern has been written for a cast on with straight needles; if you wish to join into the round straight away, work row 1 twice and omit row 2.

1st size only

Row 1: *P2, K2, rep from * to end.

Row 2: As row 1.

2nd size only

Row 1: P1, *K2, P2, rep from * to last 3 sts, K2, P1.

Row 2: K1, *P2, K2, rep from * to last 3 sts, P2, K1.

3rd size only

Row 1: *K2, P2, rep from * to end.

Row 2: As row 1.

4th size only

Row 1: K1, *P2, K2, rep from * to last 3 sts, P2, K1.

Row 2: P1, *K2, P2, rep from * to last 3 sts, K2, P1.

All sizes – both socks

Change to a 2.5mm short circular needle, 80cm circular needle for magic loop or divide the stitches across DPNs and join into a circle, **place marker**. You will sew up the small gap where you knitted the first two rows later. Cont in rib as set for your size for 14 more rounds.

Leg

Use either the Written Instructions or Charts for Panel A, Panel B, Panel E and Panel F for Left Sock and Panel C, Panel D, Panel E and Panel F for Right Sock depending on your size. Start at rnd 1, setting the pattern panels as instructed. You may find it easier to use stitch markers for front and back sections.

Panel A (22 sts)

Written Instructions

- Rnds 1–4: P22.
Rnd 5: P3, (P2tog, P2) 4 times, inc 5, P2.
Rnd 6: P15, K2, P1, K2, P2.
Rnd 7: P13, T4B, P1, T4F.
Rnd 8: P11, K4, P5, K2.
Rnd 9: P11, C4B, P5, K2.
Rnd 10: As rnd 8.
Rnd 11: P9, T4B, T4F, P1, T4B.
Rnd 12: P9, K2, P4, K2, P1, K2, P2.
Rnd 13: P2, inc 5, P4, T4B, P4, dec 5, P2.
Rnd 14: P2, K2, P1, K2, P4, K2, P9.
Rnd 15: T4B, P1, T4F, T4B, P9.
Rnd 16: K2, P5, K4, P11.
Rnd 17: K2, P5, C4B, P11.
Rnd 18: As rnd 16.
Rnd 19: T4F, P1, T4B, T4F, P9.
Rnd 20: As rnd 14.
Rnd 21: P2, dec 5, P4, T4F, P4, inc 5, P2.
Rnd 22: As rnd 12.
Rnd 23: P9, T4F, T4B, P1, T4F.
Rnd 24: As rnd 8.
Rnd 25: P11, C4F, P5, K2.
Rnd 26: As rnd 8.
Rnd 27: As rnd 11.
Rnd 28: As rnd 12.
Rnd 29: As rnd 13.
Rnd 30: As rnd 14.

Panel B

Written Instructions

- Rnd 1: T4B, P1, T4F, T4B, P9. 22 sts.
Rnd 2: K2, P5, K4, P11.
Rnd 3: K2, P5, T4B, P11.
Rnd 4: K2, P5, K2, P13.
Rnd 5: T4F, P1, T4B, P13.
Rnd 6: P2, K2, P1, K2, P15.
Rnd 7: P2, dec 5, (P2, Pfb) 4 times, P3.

Panel C (22 sts)

Written Instructions

- Rnds 1–4: P22.
Rnd 5: P2, inc 5, (P2, P2tog) 4 times, P3.
Rnd 6: P2, K2, P1, K2, P15.
Rnd 7: T4B, P1, T4F, P13.
Rnd 8: K2, P5, K4, P11.
Rnd 9: K2, P5, C4F, P11.
Rnd 10: As rnd 8.
Rnd 11: T4F, P1, T4B, T4F, P9.
Rnd 12: P2, K2, P1, K2, P4, K2, P9.
Rnd 13: P2, dec 5, P4, T4F, P4, inc 5, P2.
Rnd 14: P9, K2, P4, K2, P1, K2, P2.
Rnd 15: P9, T4F, T4B, P1, T4F.
Rnd 16: P11, K4, P5, K2.
Rnd 17: P11, C4F, P5, K2.
Rnd 18: As rnd 16.
Rnd 19: P9, T4B, T4F, P1, T4B.
Rnd 20: As rnd 14.
Rnd 21: P2, inc 5, P4, T4B, P4, dec 5, P2.
Rnd 22: As rnd 12.
Rnd 23: T4B, P1, T4F, T4B, P9.
Rnd 24: As rnd 8.
Rnd 25: K2, P5, C4B, P11.
Rnd 26: As rnd 8.
Rnd 27: As rnd 11.
Rnd 28: As rnd 12.
Rnd 29: As rnd 13.
Rnd 30: As rnd 14.

Panel D

Written Instructions

- Rnd 1: P9, T4F, T4B, P1, T4F. 22 sts.
Rnd 2: P11, K4, P5, K2.
Rnd 3: P11, T4F, P5, K2.
Rnd 4: P13, K2, P5, K2.
Rnd 5: P13, T4F, P1, T4B.
Rnd 6: P15, K2, P1, K2, P2.
Rnd 7: P3, (Pfb, P2) 4 times, dec 5, P2.

Panel E

Written Instructions

- Rnd 1: (RT) twice. 4 sts.
Rnd 2: K4.
Rnd 3: K1, RT, K1.
Rnd 4: K4.

Panel F

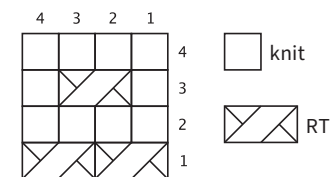
Written Instructions

- Rnd 1: (LT) twice. 4 sts.
Rnd 2: K4.
Rnd 3: K1, LT, K1.
Rnd 4: K4.

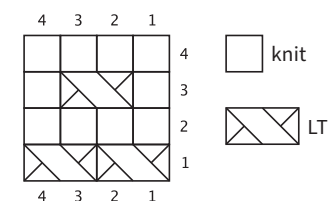
Chart Note

When working from a chart you will read all rounds from right to left. Grey “no stitch” blocks are exactly that – no stitch. So ignore them as you count the stitches for the panel on that round.

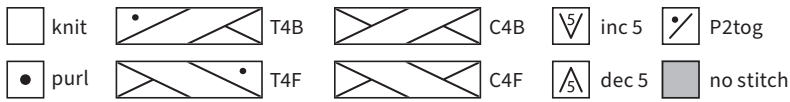
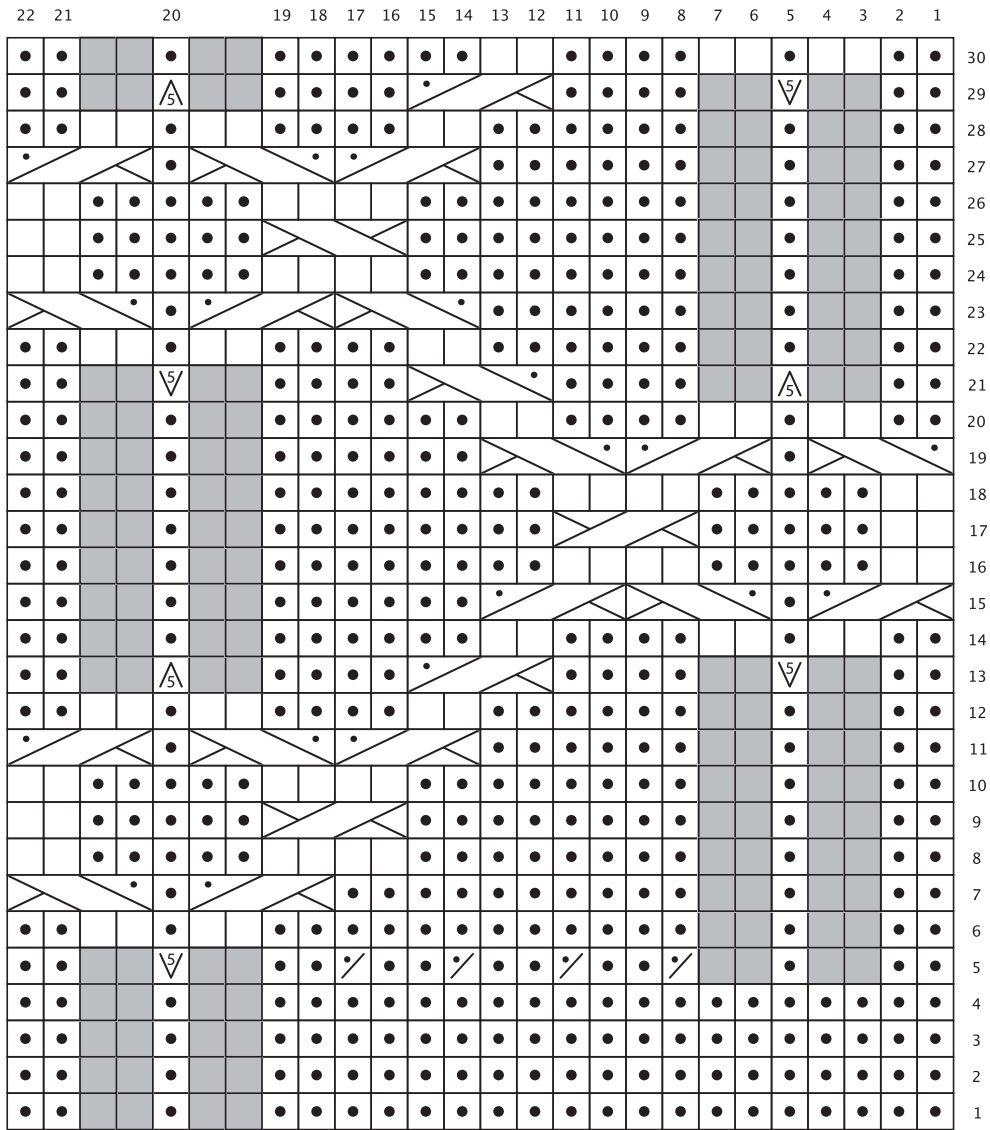
Panel E Chart



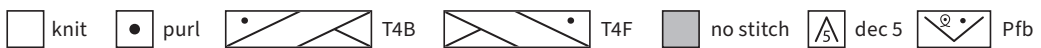
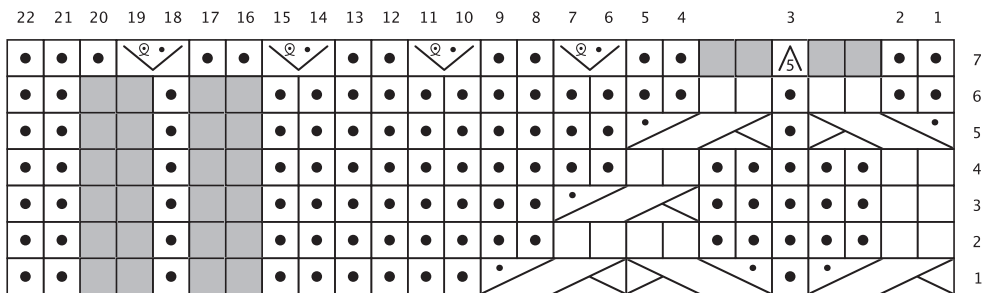
Panel F Chart



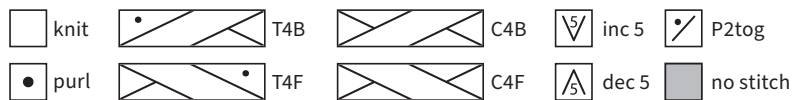
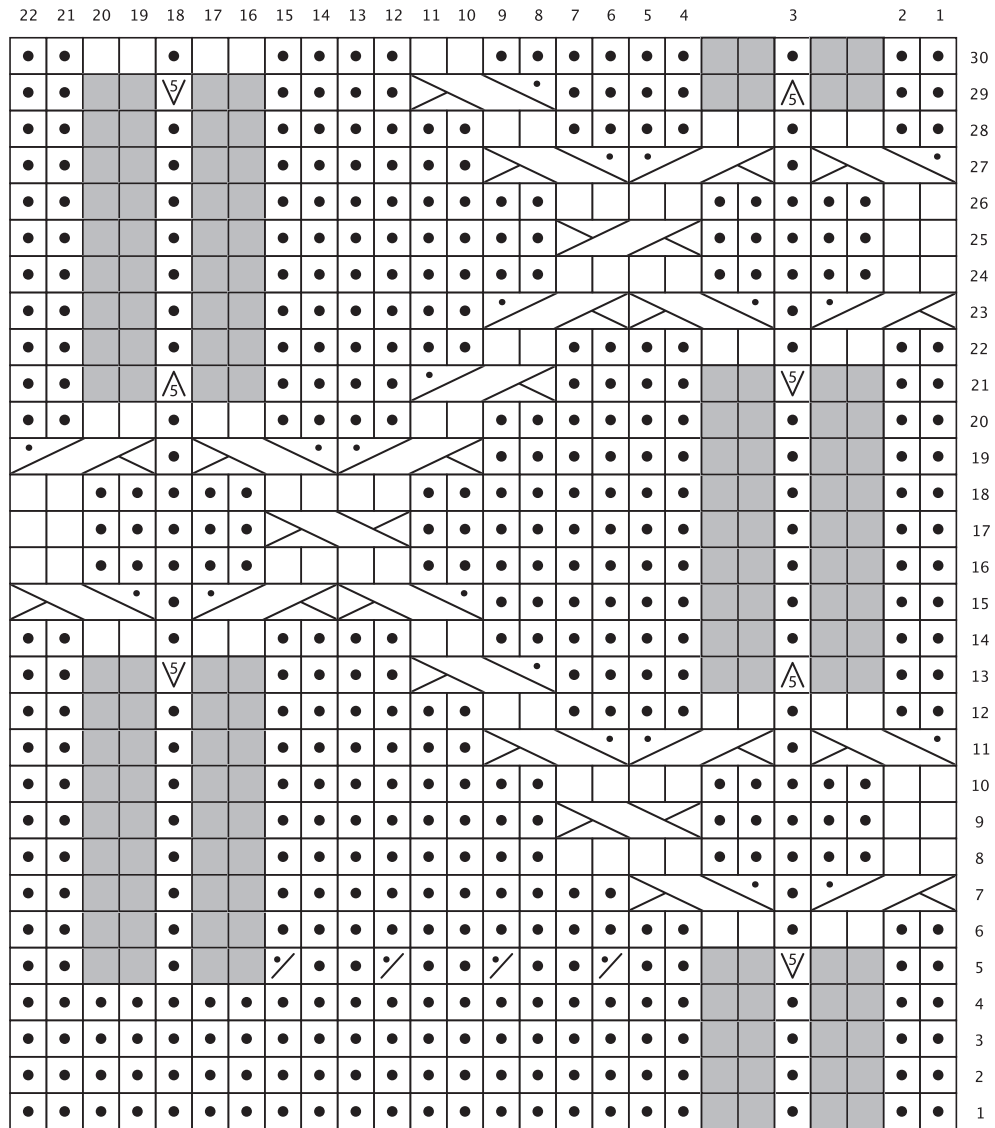
Panel A Chart



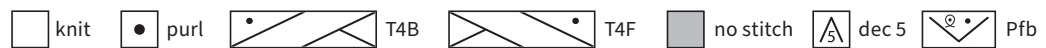
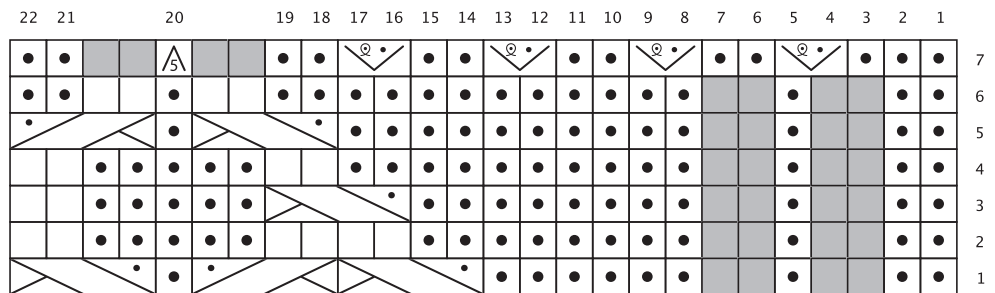
Panel B Chart



Panel C Chart



Panel D Chart





Left Sock

Set Pattern Panel

1st size only

Rnds 1–30: P4, work 22 sts of **Panel A**, P4, K2, (P2, work 4 sts of **Panel E**) twice, P2, (work 4 sts of **Panel F**, P2) twice, K2. 60 sts.

2nd size only

Rnds 1–30: K1, P4, work 22 sts of **Panel A**, P4, K4, (P2, work 4 sts of **Panel E**) twice, P2, (work 4 sts of **Panel F**, P2) twice, K3. 64 sts.

3rd size only

Rnds 1–30: K2, P4, work 22 sts of **Panel A**, P4, K2, (work 4 sts of **Panel E**, P2) 3 times, (work 4 sts of **Panel F**, P2) twice, work 4 sts of **Panel F**. 68 sts.

4th size only

Rnds 1–30: P1, K2, P4, work 22 sts of **Panel A**, P4, K2, P2, (work 4 sts of **Panel E**, P2) 3 times, (work 4 sts of **Panel F**, P2) twice, work 4 sts of **Panel F**, P1. 72 sts.

All sizes

Rnds 31–46: Rep rnds 15–30 of **Panel A** in pattern as set, **at the same time** cont to work **Panels E and F**.

Rnds 47–53: Work rnds 1–7 of **Panel B** (instead of **Panel A**) in pattern as set, **at the same time** cont to work in **Panels E and F**.

Right Sock

Set Pattern Panel

1st size only

Rnds 1–30: P4, work 22 sts of **Panel C**, P4, K2, (P2, work 4 sts of **Panel E**) twice, P2, (work 4 sts of **Panel F**, P2) twice, K2. 60 sts.

2nd size only

Rnds 1–30: K1, P4, work 22 sts of **Panel C**, P4, K4, (P2, work 4 sts of **Panel E**) twice, P2, (work 4 sts of **Panel F**, P2) twice, K3. 64 sts.

3rd size only

Rnds 1–30: K2, P4, work 22 sts of **Panel C**, P4, K2, (work 4 sts of **Panel E**, P2) 3 times, (work 4 sts of **Panel F**, P2) twice, work 4 sts of **Panel F**. 68 sts.

4th size only

Rnds 1–4: P1, K2, P4, work 22 sts of **Panel C**, P4, K2, P2, (work 4 sts of **Panel E**, P2) 3 times, (work 4 sts of **Panel F**, P2) twice, work 4 sts of **Panel F**, P1. 72 sts.

All sizes

Rnds 31–46: Rep rnds 15–30 of **Panel C** in pattern as set, **at the same time** cont to work in **Panels E and F**.

Rnds 47–53: Work rnds 1–7 of **Panel D** (instead of **Panel C**) in pattern as set, **at the same time** cont to work in **Panels E and F**.

Both Socks

Heel Flap

Set up row: P30 [32:34:36] sts, **do not turn**, work Heel Flap on remaining 30 [32:34:36] sts and proceed as follows:

Change to 2.5mm DPNs if you are using a short circular needle. There is no need to use DPNs if you are using magic loop method. You may prefer to place the spare stitches from the top of the foot onto a stitch holder if you are using a short circular or DPNs whilst you work the Heel.

Row 1: K2, (sl1p, P1) until there are 28 [30:32:34] sts on your needle, sl1p, K1, turn. 30 [32:34:36] sts.

Row 2: Sl1p, (P1, K1) to last 3 sts, P3, turn.

Row 3: Sl1p, K1, (sl1p, P1) to last 2 sts, sl1p, K1, turn.

Rep rows 2–3 until Heel measures 5 [6:7:8]cm or desired length, finishing on row 3.

Turn Heel

Row 1: Sl1p, P16 [17:18:19], P2tog, P1, turn.

Row 2: Sl1p, K5, ssk, K1, turn.

Row 3: Sl1p, P6, P2tog, P1, turn.

Row 4: Sl1p, K7, ssk, K1, turn.

Cont in this way, adding one stitch between slip stitch and ssk or P2tog on each row (ie, **Row 5:** Sl1p, P8, P2tog, P1, turn; **Row 6:** Sl1p, K9, ssk, K1, turn; etc) until all of the Heel sts are used. Depending on how many sts are in your Heel Flap, you may find that the K1 and P1 stitch is not required at the end of the last two rows.

Knit across Heel sts if required to bring you to the left hand side of the Heel Flap (with the outside of the flap facing you), ready to pick up 1 stitch for every 2 rows of Heel Flap knitted. Remember that if you made the Heel Flap bigger, you will need to pick up more stitches. Once you have picked up the stitches, **place a marker**.

Purl across the top of the foot sts, **place marker**, then pick up 1 stitch for every 2 rows of Heel Flap knitted up the other side of the Heel. Knit across the top of the Heel and then shape the Gusset as below, and **at the same time**, working pattern **Panel G** across the top of the foot.

Needle Note

If you are using DPNs and/or have placed your stitches on a stitch holder, you can arrange the needles as follows:

Needle 1 for stitches across Heel.

Needle 2 for picked-up stitches down side of foot.

Needle 3 for stitches across top of foot (work stitches off stitch holder if required).

Needle 4 for picked-up stitches on other side of foot.

You may find that stitch markers are not required at first.

Shape Gusset

Rnd 1: K to 3 sts before the marker, K2tog, K1, **slip marker**, K1, P28 [30:32:34], K1, **slip marker**, K1, ssk, K to marker.

Rnd 2: **Slip marker**, K2, P26 [28:30:32], K2, **slip marker**, K to 3 sts before marker.

Rnd 3: K2tog, K1, **slip marker**, K3, P24 [26:28:30], K3, **slip marker**, K1, ssk, K to marker.

These 3 rnds set the Gusset decrease and **Panel G**.

Cont to work **Panel G**, proceed as follows:

Rep rnds 2–3 to shape the Gusset, **at same time** work **Panel G** over top of foot, starting with rnd 4.

Cont in this way, decreasing by 2 stitches at the Gusset on every other rnd until there are 60 [64:68:72] sts on the needle.

Once you have reached the required number of stitches, continue to knit each rnd in pattern as set until rnd 34 of **Panel G** has been worked.

Knit all sts, cont until you reach 5cm before the desired length ready to start the toes. Don't be afraid to try your sock on before decreasing for the toes.

Panel G

Written instructions

Rnd 1: K1, P28 [30:32:34], K1.

Rnd 2: K2, P26 [28:30:32], K2.

Rnd 3: K3, P24 [26:28:30], K3.

Rnd 4: K4, P22 [24:26:28], K4.

Rnd 5: K5, P20 [22:24:26], K5.

Rnd 6: K6, P18 [20:22:24], K6.

Rnd 7: K7, P16 [18:20:22], K7.

Rnd 8: K8, P14 [16:18:20], K8.

Rnd 9: P1, K8, P12 [14:16:18], K8, P1.

Rnd 10: P2, K8, P10 [12:14:16], K8, P2.

Rnd 11: P3, K8, P8 [10:12:14], K8, P3.

Rnd 12: P4, K8, P6 [8:10:12], K8, P4.

Rnd 13: P5, K8, P4 [6:8:10], K8, P5.

Rnd 14: P6, K8, P2 [4:6:8], K8, P6.

Rnd 15: P7, K16 [8:8:8], P0 [2:4:6], K0 [8:8:8], P7.

Rnd 16: P8, K14 [16:8:8], P0 [0:2:4], K0 [0:8:8], P8.

Rnd 17: K1, P8, K12 [14:16:8], P0 [0:0:2], K0 [0:0:8], P8, K1.

Rnd 18: K2, P8, K10 [12:14:16], P8, K2.

Rnd 19: K3, P8, K8 [10:12:14], P8, K3.

Rnd 20: K4, P8, K6 [8:10:12], P8, K4.

Rnd 21: K5, P8, K4 [6:8:10], P8, K5.

Rnd 22: K6, P8, K2 [4:6:8], P8, K6.

Rnd 23: K7, P16 [8:8:8], K0 [2:4:6], P0 [8:8:8], K7.

Rnd 24: K8, P14 [16:8:8], K0 [0:2:4], P0 [0:8:8], K8.

Rnd 25: K9, P12 [14:16:8], K0 [0:0:2], P0 [0:0:8], K9.

Rnd 26: K10, P10 [12:14:16], K10.

Rnd 27: K11, P8 [10:12:14], K11.

Rnd 28: K12, P6 [8:10:12], K12.

Rnd 29: K13, P4 [6:8:10], K13.

Rnd 30: K14, P2 [4:6:8], P14.

Rnd 31: K30 [15:15:15], P0 [2:4:6], K0 [15:15:15].

Rnd 32: K30 [32:16:16], P0 [0:2:4], K0 [0:16:16].

Rnd 33: K30 [32:34:17], P0 [0:0:2], K0 [0:0:17].

Rnd 34: K30 [32:34:36].

Toes

Pattern Note

At some point whilst decreasing for the toes, if you are using a short circular needle you may need to change back to DPNs or use the magic loop method as the number of stitches becomes too small for the circular. It's up to you when you choose to do that, and how you distribute the stitches across the needles; just keep following the pattern as set below.

Create the toes as follows:

Rnd 1: K1, ssk, K24 [26:28:30] sts, K2tog, K1, **place marker** (if required), K1, ssk, K24 [26:28:30] sts, K2tog, K1. 56 [60:64:68] sts.

Rnd 2: Knit one round, **slipping markers** as you come to them.

Rnd 3: K1, ssk, K to 3 sts before marker, K2tog, K1, **slip marker**, K1, ssk, K to 3 sts before marker, K2tog, K1. 52 [56:60:64] sts.

Rep rnds 2–3 until you have 28 [28:32:32] sts left and divide these between two needles so that front and back of socks match.

Graft toes using Kitchener stitch, weave in all ends and sew up the small gap at the cuff where you cast on.

Follow us

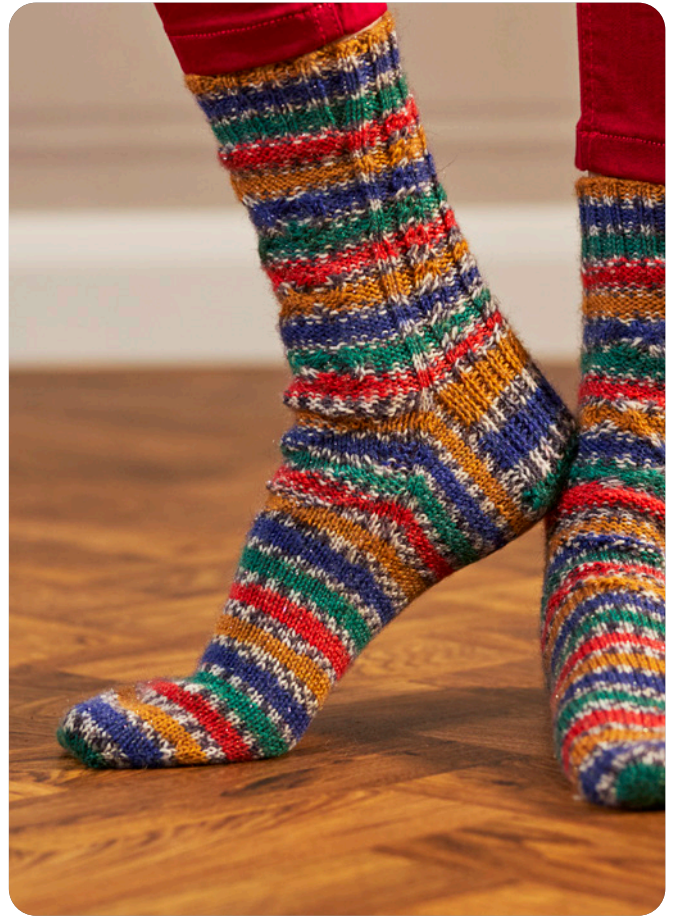


Join our Facebook Community

 **WYS Crafter's Hub**

Queries

For any pattern queries please visit wyspinners.com/errata or contact knitting@wyspinners.com



WEST YORKSHIRE SPINNERS

WYS1000282



2 Airedale Park, Royd Ings Avenue, Keighley, West Yorkshire. BD21 4DG.
+44 (0)1535 664500 sales@wyspinners.com wyspinners.com